



**Dogs Park & Dogs Gym
Equipment Design & Products**

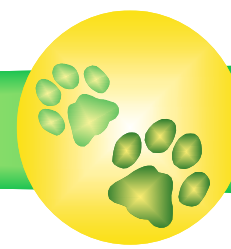
KAPSPETS AAA

JUMPS AND WEAVE

D  **D**  **D** 
PARK

D  **D**  **D** 
Gym

ROVER JUMP HURDLE



The **Rover Jump Hurdle** is an adjustable jump bar challenge that allows for quick and easy height changes — higher for experienced jumpers and lower for beginners and small dogs.

Size: 36" tall x 60" wide with adjustable jumps that are: 12", 15", 24" and 31".

Material - Mild Steel (MS) - Provides good overall strength and durability.

Powder Coating: Offers a protective layer against rust and corrosion / PVC jump bar.

Installation -

Freestanding - Use the Rover Jump Hurdle without a mount for a flexible training option.

Surface Mount - Securely fasten the Rover Jump Hurdle directly to a concrete surface for a permanent training fixture.



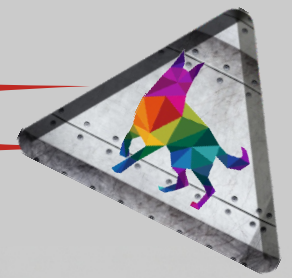
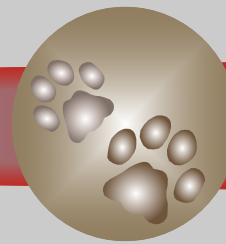
SKU KAPO0031RJH

LEAD
TIME
4-6
WEEKS



www.kapspetsaaa.com

DOG TREADMILL



"Rain or shine, ensure your pet gets their daily exercise with the KAPSPETS AAA Dog Treadmill. Featuring a heavy-duty reinforced frame, secure wire-mesh safety enclosures, and an easy-to-use control panel, our treadmill provides a safe, controlled environment for your dog to walk or run. Give your pet the gift of consistent fitness right from the comfort of your home."

KAPSPETS AAA Dog Treadmill: Premium Pet Fitness

- **Built Tough:** Heavy-duty frame designed for maximum stability and durability.
- **Ultimate Safety:** Secure mesh side enclosures keep your pet safely on track while maintaining visibility.
- **Custom Pace:** Easy-to-use control panel to adjust the speed to your dog's specific fitness level.
- **All-Weather Exercise:** The perfect way to burn off energy indoors, year-round.



SKU KAP00061DTM

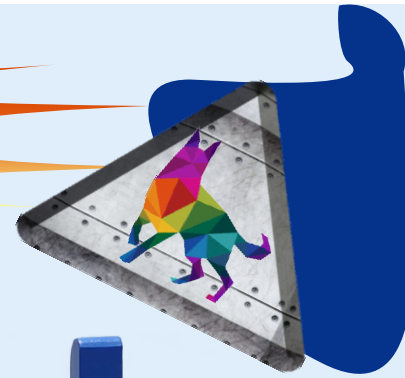
Suitable - All Breeds
Type - 6Ft Motorized
Motor Power - 2HP
Maximum User Weight - 130 kg
Motor Type - AC
Use - Indoor
Speed - 0-50
Peak Motor Power (in HP) - 2HP
Country of Origin - Made in India



**LEAD
TIME
4-6
WEEKS**

www.kapspetsaaa.com

HOOP JUMP



The **Hoop Jump** to be of a consistent shape, constructed of an impact-absorbing material. The height of the hoop should not be lowered. The hoop must be directly mounted in a substantial frame structure which must be secured in such a way that dogs cannot knock the obstacle over from either direction; the frame shall not have a beam across the top.

Hoop Jump (Ring)

Dimension for this obstacle are as follows:

Aperture diameter Large Size Outer Ring Size 72cm and inside diameter 44cm. (orange in colour)

Aperture Centre from the ground:

Small Dogs - 49cm (1ft 7.3ins)

Medium Dogs - 55cm (1ft.9.6ins)

Large Dogs - 80cm (2ft. 7.5ins)

Material - Galvanized Iron (GI) - Provides good overall strength and durability.

Powder Coating: Offers a protective layer against rust and corrosion / PVC jump bar.

Installation - Freestanding: Use the Hoop Jump without a mount for a flexible training option.

Surface Mount - Securely fasten the Hoop Jump directly to a concrete surface for a permanent training fixture.

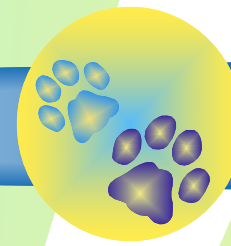


SKU KAPO0032HJ



WWW.KAPSPETSAAA.COM

SWAY BRIDGE



This 8-foot Sway Bridge connects two towers in the above structure. Middle bridge is 2 ft wide and 6.5 ft long, made with 2 by 2 wood strips with cables through the holes on each side with 1/4" spacers between each strip. Ramps are 2 ft. wide and 4 ft. or 5 ft. long. Top of ramp is 24" high with bridge hanging freely in the middle.

Size - 8 ft long mid section, 5 ft. ramps, and 30" high.

Material - Mild Steel (MS) with powder coated and our Pine wood undergoes a meticulous treatment, safeguarding it from decay and insect infestation. Through our innovative wood burning technique, we accentuate the pine's inherent texture, complemented by a selection of transparent colours, fostering an aesthetically pleasing atmosphere for dogs.

Asian Paints Pu for Exterior Glossy & Epoxy - guards against the elements of Nature. With a highly flexible and UV resistant film, it protects wood against sun and water and also prevents it from yellowing.

Installation -

Freestanding - Use the Sway Bridge Hurdle without a mount for a flexible training option.

Surface Mount - Securely fasten the Sway Bridge Hurdle directly to a concrete surface for a permanent training fixture.



**LEAD
TIME
4-6
WEEKS**

www.kapspetsaaa.com

SWING PLANK

Swing plank consists of 20" by 48" Pine wood surface, and 4 uprights with chains

- Uprights are 15" high, bottom end bases are 40" wide
- Bolts screwed in uprights and surface
- Paint colour of your choice
- Bungee cord is stretched tightly to prevent the plank from moving too rapidly as the dog moves over it

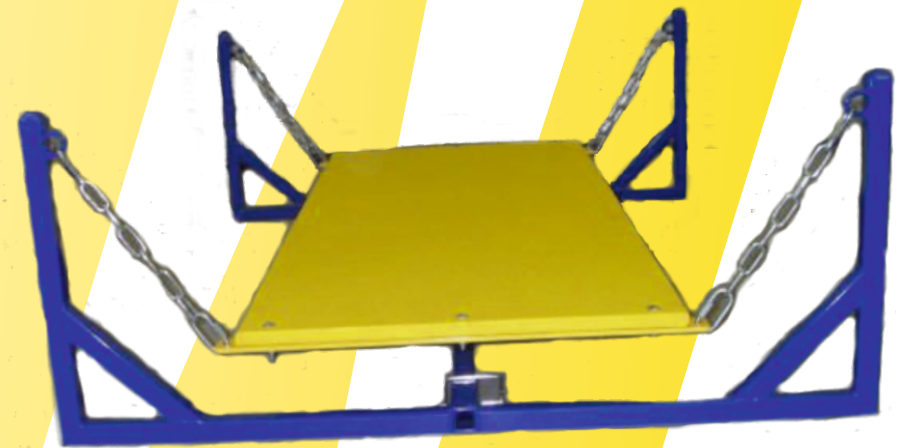
Material - Mild Steel (MS) with powder coated and our Pine wood undergoes a meticulous treatment, safeguarding it from decay and insect infestation. Through our innovative wood burning technique, we accentuate the pine's inherent texture, complemented by a selection of transparent colours, fostering an aesthetically pleasing atmosphere for dogs.

Asian Paints Pu for Exterior Glossy & Epoxy - guards against the elements of Nature. With a highly flexible and UV resistant film, it protects wood against sun and water and also prevents it from yellowing.

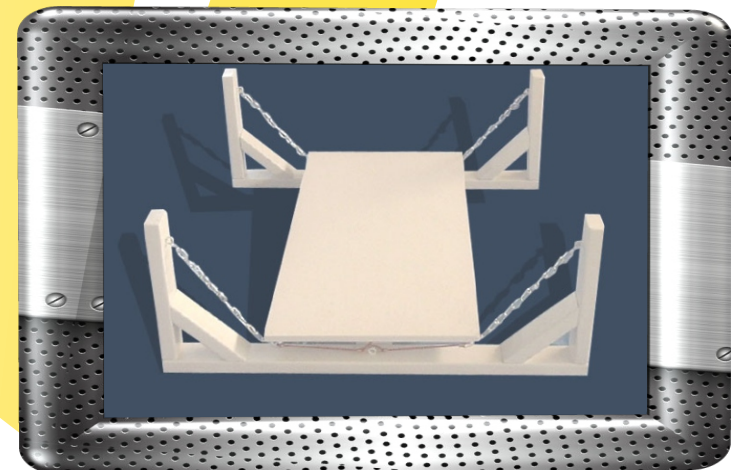
Installation -

Freestanding - Use the Swing Plank without a mount for a flexible training option.

Surface Mount - Securely fasten the Swing Plank directly to a concrete surface for a permanent training fixture.

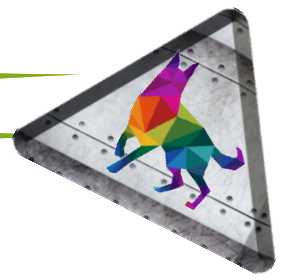


SKU KAP00034SP



www.kapspetsaaa.com

JUMP HURDLES



Jump Hurdle — higher for experienced jumpers and lower for beginners and small dogs.

Size: 1.5' W x 3.5' L x 1', 2', 3' H (Set of Three)

Materials:

Galvanized Iron (GI) with powder coated and our Pine wood undergoes a meticulous treatment, safeguarding it from decay and insect infestation. Through our innovative wood burning technique, we accentuate the pine's inherent texture, complemented by a selection of transparent colours, fostering an aesthetically pleasing atmosphere for dogs.

Asian Paints Pu for Exterior Glossy & Epoxy - guards against the elements of Nature. With a highly flexible and UV resistant film, it protects wood against sun and water and also prevents it from yellowing.

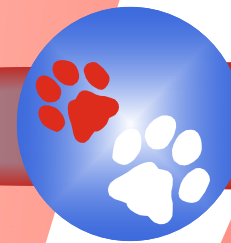
Installation -

Freestanding - Use the Jump Hurdle without a mount for a flexible training option.

Surface Mount - Securely fasten the Jump Hurdle directly to a concrete surface for a permanent training fixture.



BROAD JUMP



The Broad Jump (or Long jump) is a jump that can be seen at every level of competition. The challenge is for your dog to jump over the boards, not to run on top of them.

Each plank is slightly shorter than the next, allowing them to nestle inside of each other for compact storage.

Specifications: Longest plank is 60" long x 12" tall. Shortest plank is 48" long x 6" tall. Free standing marker poles are 48" tall.

Long Jump : Each unit must be a minimum length of 1.219m (4ft). Marker Poles with a minimum height of approximately 1.219m shall be used, these should not be attached to any part of the obstacle.

Large Dogs (3 - 5 units): The overall maximum length to be between 1.2m (3ft 11.2ins) and 1.5m (4ft 11ins). The height of the front unit to be 12.7cm (5ins) and the height of the rear unit to be 38.1cm (15ins).

Medium Dogs (3 - 4 units): The overall maximum length to be between 70cm (2ft 3.8ins) and 90cm (2ft 11.4ins). The height of the front unit to be 12.7cm (5ins) and the height of the rear unit to be 30.5cm (12ins).

Material - Mild Steel (MS) with powder coated and our Pine wood undergoes a meticulous treatment, safeguarding it from decay and insect infestation. Through our innovative wood burning technique, we accentuate the pine's inherent texture, complemented by a selection of transparent colours, fostering an aesthetically pleasing atmosphere for dogs.

Asian Paints Pu for Exterior Glossy & Epoxy - guards against the elements of Nature. With a highly flexible and UV resistant film, it protects wood against sun and water and also prevents it from yellowing.

Freestanding - Use the Broad Jump Hurdle without a mount for a flexible training option.

Surface Mount - Securely fasten the Broad Jump Hurdle directly to a concrete surface for a permanent training fixture.

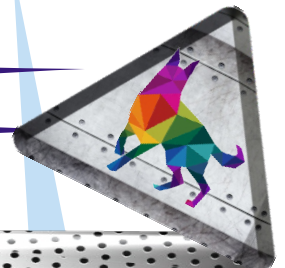


SKUKAP00036BJ/MB
SKUKAP00036BJ/LB



www.kapspetsaaa.com

DOUBLE JUMPS



Our **Double Jumps** are sturdy and made out of MS frame (Powder Coated with purple, blue yellow or else green colour). You simply set it behind your existing single jump and it holds the bottom two bars, it works with most PVC and Metal jumps. Wings can be detached from the uprights in a few seconds, so you can easily transport to other desire locations.

Size - Each jump comes with the required set of bar supports. Ascending jump has three 4' or 5' striped bars, Bidirectional jump has four 4' or 5' striped bars.

The up-rights are 32" tall. The sides (approximately 15" wide) attach to the uprights using two stainless steel bolts and wing nuts.

The **Double Jump** is available with or without wings and can be made in a combination of two colors.

Material - Mild Steel (MS) - Provides good overall strength and durability.

Powder Coating: Offers a protective layer against rust and corrosion, especially important for outdoor equipment / PVC jump bar.

Installation -

Freestanding - Use the Double Jump Hurdle without a mount for a flexible training option.

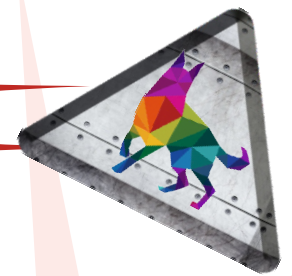
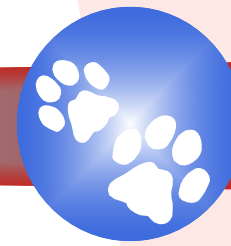
Surface Mount - Securely fasten the Double Jump Hurdle directly to a concrete surface for a permanent training fixture.



SKUKAPO0037DJ



TRIPLE JUMPS



Triple Jumps - These affordable wingless jumps are perfect for agility training and competition. The double and triple jumps meet all international heights and specifications, and come with the appropriate number of jump bars.

Image 1 - With the kit, you receive two side panels. The side panels are the uprights for the front and middle bar of the triple you're building. Your existing single jump acts as the uprights for the back bar of the triple jump. Simply set the side panels behind your single jump; there are position tabs on each side panel that you allow for quick and easy setup. Then all you need to complete your triple jump is three matching jump bars.

Image 2 - Jump bars not included. It includes three matching jump bars, a complete triple. There are position tabs on each side panel that you allow for quick and easy setup. Then all you need to complete your triple jump is three matching jump bars.

Material - Mild Steel (MS) - Provides good overall strength and durability.
Powder Coating: Offers a protective layer against rust and corrosion / PVC jump bar. You simply set it behind your existing single jump and it holds the bottom two bars, it works with most PVC and Metal jumps.

Installation -

Freestanding - Use the Triple Jump Hurdle without a mount for a flexible training option.

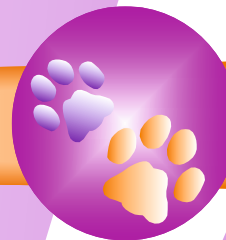
Surface Mount - Securely fasten the Triple Jump Hurdle directly to a concrete surface for a permanent training fixture.

Triple Jumps are available in 4 foot and 5 foot options.

SKUKAP00038TJ



WING HURDLE EXTENDED



Our **Wing Hurdles with extended and adjustable incline jump** are sturdy and made out of MS frame (Powder Coated with purple, blue yellow or else green colour). You simply set it behind your existing single jump and it holds the bottom two bars, it works with most PVC and Metal jumps. Wings can be detached from the uprights in a few seconds, so you can easily transport to other desire locations.

The uprights are 3' tall / The wings (approximately 24" wide) attach to the uprights using two stainless bolts. Each jump comes with your choice of 4' or 5' tapeless striped bar and jump cup strips that hold the bars in positions every 2 inches from 4" - 26".

Material - Mild Steel (MS) - Provides good overall strength and durability.

Powder Coating: Offers a protective layer against rust and corrosion / PVC jump bar.

Installation -

Freestanding - Use the Wing Hurdle Ext without a mount for a flexible training option.

Surface Mount - Securely fasten the Wing Hurdle Ext directly to a concrete surface for a permanent training fixture.

SKUKAP00039WHE

**LEAD
TIME
4-6
WEEKS**

www.kapspetsaaa.com

WING HURDLE SINGLE



Our **Wing Hurdles single** are sturdy and made out of MS frame (Powder Coated with purple, blue yellow or else green colour). Hurdles are set up with one pole made from PVC pipe.

The poles have a diameter of 3 to 5 cm and must have contrasting colours in at least 3 segments. Wings can be detached from the uprights in a few seconds, so you can easily transport to other desire locations.

Specifications - The start of the taper to the outside upright of the wing must be at least 75 cm high. The hurdle wings must not be connected or fixed to each other.

The uprights are 3' tall, each jump comes with your choice of 4' or 5' tapeless striped bar and jump cup strips that hold the bars in positions every 2 inches from 4" - 26". The leg on each side of the inner upright should be long enough to ensure stability of the wing.

**LEAD
TIME
4-6
WEEKS**

Material - Mild Steel (MS) - Provides good overall strength and durability.

Powder Coating: Offers a protective layer against rust and corrosion / PVC jump bar.

Installation -

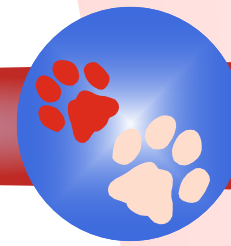
Freestanding - Use the Single Wing Hurdle without a mount for a flexible training option.

Surface Mount - Securely fasten the Single Wing Hurdle directly to a concrete surface for a permanent training fixture.

SKUKAP00040WHS

www.kapspetsaaa.com

CHANNEL WEAVES



We also offer **channel weaves** for training young dogs.

One of the newest methods of training the dog agility weave poles that is gaining in popularity is the "channel method", in which two parallel rows of weave poles are put side by side.

The poles are 24" apart, which is the optimum distance required. Weave poles are always spaced the same, no matter what the size of the dog using the poles.

Specifications: The poles are 36" tall, spaced 24" apart, and 1" thick. The same distance between the poles is used for all size dogs.

Material - Mild Steel (MS) - Provides good overall strength and durability.

Powder Coating: Offers a protective layer against rust and corrosion / PVC jump bar.

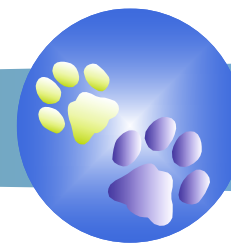
Installation -

Freestanding - Use the Channel Weaves without a mount for a flexible training option.

Surface Mount - Securely fasten the Channel Weaves directly to a concrete surface for a permanent training fixture.



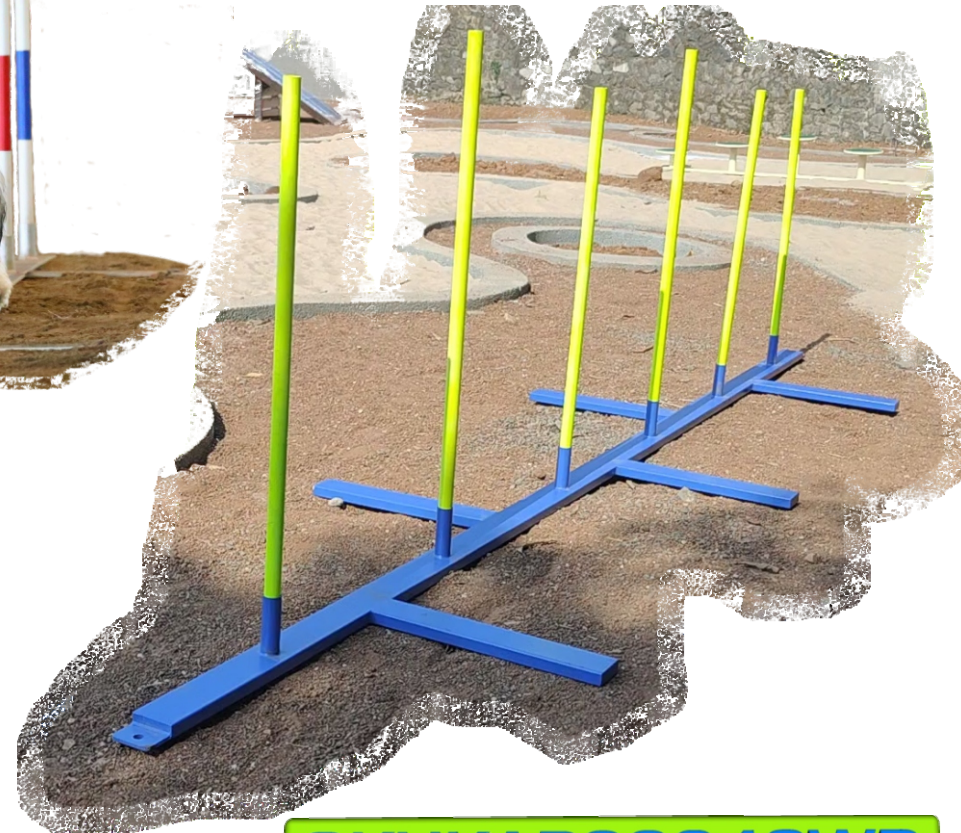
WEAVE POLES



Weave Poles - A dog enters to the right of the first pole at top speed. While focused straight ahead, he weaves through each pole as quickly as he can, staying as close to the center line as possible.

The six poles are fully adjustable, and you can set them for a straight. They are easy to assemble and meet competition guidelines.

SIZE - 35" pole height (weave poles using PVC pipe) / 24" spacing / Smooth ends to avoid injury to your pet.



Material - Galvanized Iron (GI) - Provides good overall strength and durability.

Powder Coating: Offers a protective layer against rust and corrosion / PVC jump bar.

Installation - Freestanding - These PVC Weave Poles mounted on MS Pipe further mounted on MS square pipe along with wings for better balance and stability.

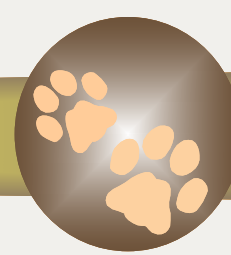
SKUKAP00042WP



LEAD
TIME
4-6
WEEKS

www.kapspetsaaa.com

ARCHWAY RUN



Why Dogs Love It

- Dogs enjoy the excitement of running through a series of arches – it feels like a fun tunnel adventure.
- The repeated motion keeps them active and engaged, sparking their natural curiosity.
- Encourages playful energy while building trust with their owner or trainer.
- Perfect for dogs of all ages – from puppies learning coordination to adults practicing agility.
- Running through arches gives dogs a sense of achievement, boosting their confidence each time.

Size: Set of 6 arches, 24" w x 24" h x 17" openings.



Materials:

GI (Galvanized Iron) with powder coated and Waterproof MDF with Acrylic Golden or else Copper Colour sheet for elegant appearance.

Installation -

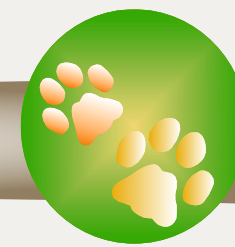
Freestanding - Archway Run mounted on parallel square GI pipe on both sides for a better balance and stability. No need for concrete surface for a permanent training fixture. All Six archway Run can



SKUKAP00043AR

[WWW.KAPSPETSAAA.COM](http://www.kapspetsaaa.com)

STEPPING RISER



SKUKAP00045SR



Stepping Riser

The Stepping Riser presents a different challenge for dogs. This fixture has a gentle slope, adding height to each of the six stepping pods and allowing dogs to develop their balance and confidence with each use. The unified construction greatly simplifies installation. You can even add a second, third, or fourth riser to create endless possible arrangements.

Specification - Total installation Length of stepping cluster 115". Heights starts from 9" - 11" - 12" - 13" - 14". Diameter of each stepping cluster 12" with paw shape holes on metal sheet.

Material - Galvanized Iron (GI) - Provides good overall strength and durability.

Powder Coating: Offers a protective layer against rust and corrosion / PVC jump bar.

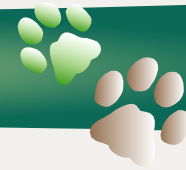
Installation - Freestanding - Use the Stepping Riser mounted on single square MS pipe with two wings creating balancing & stability for a flexible training option.

Surface Mount - Securely fasten the Stepping Riser directly to a concrete surface for a permanent training fixture.

**LEAD
TIME
4-6
WEEKS**

www.kapspetsaaa.com

STEPPING CLUSTER



Stepping Cluster

The Stepping Cluster encourages the dog to jump from platform to platform helping to develop their confidence in their abilities and ready them for more advanced obstacles in your dog park.

Specification - Total installation Length of stepping cluster 115". Heights starts from 8" - 12" - 16" - 12" - 8". Diameter of each stepping cluster 12" with paw shape holes on metal sheet.

Material - Mild Steel (MS) - Provides good overall strength and durability.

Powder Coating: Offers a protective layer against rust and corrosion / PVC jump bar.

Installation - Freestanding - Use the Stepping Riser mounted on single square MS pipe with two wings creating balancing & stability for a flexible training option. All five stepping raiser can assemble easily with allen key features.



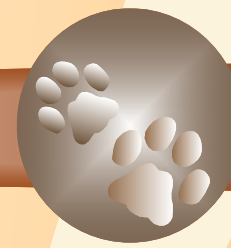
SKUKAP00046SC



LEAD TIME 4-6 WEEKS

www.kapspetsaaa.com

STEPPING PAWS



Stepping Paws made from wooden logs, require the dog either step or jump from each platform as the pods increase and decrease in heights, also helping to develop balance and confidence. The pods can be arranged to provide a true test of agility or just a fun obstacle for dogs to play on.



Dimensions:

- Large - 19" H
- Medium - 14" H
- Small - 10" H

Materials: Natural Wood logs

Asian Paints Pu for Exterior Glossy & Epoxy - guards against the elements of Nature. With a highly flexible and UV resistant film, it protects wood against sun and water and also prevents it from yellowing.

Installation -

Surface Mount - Securely placing the Stepping Paws on top of a concrete surface.



**LEAD
TIME
4-6
WEEKS**

**SKUKAP00047SPL
SKUKAP00047SPM
SKUKAP00047SPS**

Stepping
Paws



LEASH POST

A perfect amenity for any dog park; hang up leashes, coats or park a dog while getting things ready. Keeps your dog park visitors organized; gives your park a professional, clean appearance. Can be mounted near benches and tables either by ground spike or anchor bolts.

Size:

10mm Base Plate / 220mm x 220mm
16mm MS rods.
100mm Diameter / 1200mm Height



Materials: Galvanized Iron (GI) Surface mount which supports wooden cube or else GI tube. Hooks are made of wooden or else GI frame powder coated.

Installation: No need for in-ground direct bury, but surface mount on a concrete surface with the help of fastener.



SKU KAPO0028LP

LEAD TIME
4-6
WEEKS

WWW.KAPSPETSAAA.COM

DOG WATER STAND



Kapspets offers a Dog Water Stand accessible arm and a pet bowl. This attractive dual water stand provides refreshing water for dogs and their owners

Available in SS (Stainless Steel) 304. All stainless steel construction ensures years of use without rust or corrosion.

Size: Pipe Diameter - 140mm / 970 mm Height / 160 Bowl Height 160mm / 2nd Bowl Height 615mm

This Static drinking Water stand require a water supply line for pets at dogs park.

Installation: Surface mount on a concrete surface.



SKU KAP00029DWS

LEAD TIME 4-6 WEEKS

WWW.KAPSPETSAAA.COM

DOG WATER STAND

WATER TAP

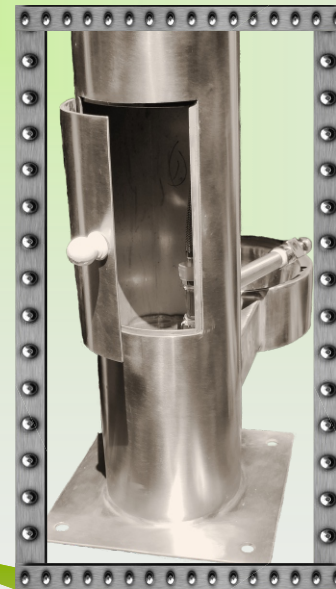
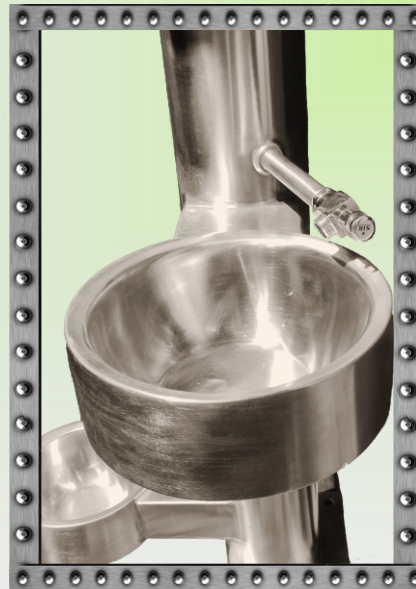


Kapspets offers a Dog Water Stand accessible arm and a pet bowl. This attractive dual water stand provides refreshing water for dogs and their owners.

Available in SS (Stainless Steel) 304. All stainless steel construction ensures years of use without rust or corrosion.

Size: Pipe Diameter - 140mm / 970 mm Height / 160 Bowl Height 160mm / 2nd Bowl Height 615mm

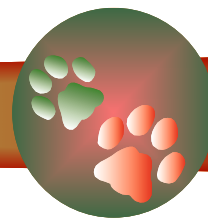
Installation: Surface mount on a concrete surface / This Static drinking Water stand require a water supply line for pets at dogs park.



SKU KAP00029DWSTAP

WWW.KAPSPETSAAA.COM

DOG WASTE STATION



Dog Waste Station ideal solution for promoting healthy, waste-free communities. Encourages dog owners to pick up after their pets.

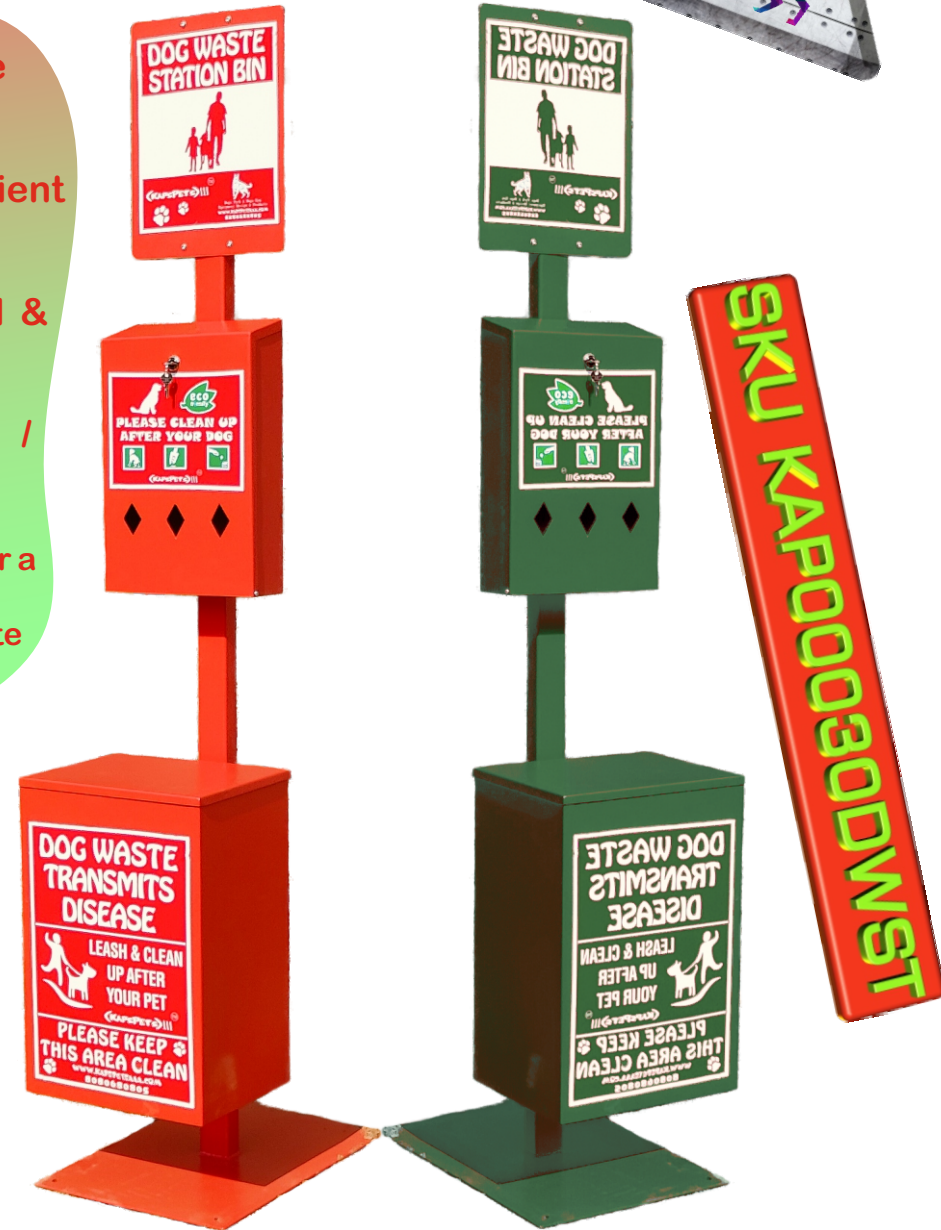
The locking dispenser holds refill boxes (included) and the convenient trash receptacle keeps the refuse neatly out of sight.

Material - Galvanized Iron GI (powder coated painted with Red & Green colour and information printed on sticker.

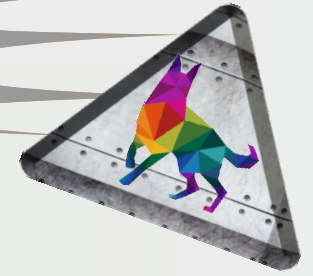
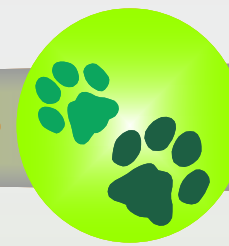
Size - Waste Box - 560mmX360mmX280mm / Poop Bags Refill Box / Plate-Plate-40cmX30cm / Pole- Height- 80"

Installation : Freestanding - Use the dog waste station without a mount for a flexible training option.

Surface Mount - Securely fasten the dog waste station directly to a concrete surface for a permanent training fixture.



DOG PARK RULES & REGULATIONS SIGN BOARD



Kapspets offers Dog Park Rules & Regulations Sign Board.

This display board provides clear guidelines for the safe and enjoyable use of the dog park. It outlines all necessary rules and regulations to ensure responsible behavior from pet owners and a secure environment for dogs and visitors.

Material Specifications:

Printing: High-quality UV flatbed printing colour. UV-printed graphics won't fade easily under sunlight. Smooth, professional finish.

Mounting: Fixed on GI (Galvanized Iron) frame with screws with powder coated. Weatherproof, rustproof, and durable.

Frame : 5mm Aluminium Composite Panel (ACP) with UV Printing

Dimensions : 6'X3.5' (Outer GI Frame) / 4'X3' Dog Park Rules

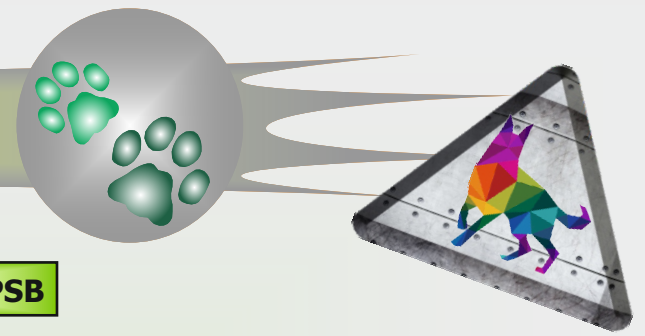
This well-structured and visually clear display helps promote safety, cleanliness, and enjoyment for all visitors at the dog park.



SKU KAP0055DPRRSB

WWW.KAPSPETSAAA.COM

PORATABLE SIGN BOARDS



About Our Agility Equipment Sign Boards

To enhance the experience of every visitor—both dogs and their owners—Kapspets installs thoughtfully designed **information sign boards** at each agility equipment station across the dog park. These sign boards serve an important purpose in creating awareness, ensuring safety, and highlighting the many benefits of engaging in agility play.

Each sign board clearly explains:

1. Why the Equipment Is Important for Dogs

- Helps dog owners understand how each structure supports physical fitness, confidence-building, and mental stimulation.
- Educates visitors about the unique role of each equipment—whether it improves balance, coordination, endurance, or problem-solving skills.

2. Key Benefits for Dogs

- Highlights how agility play boosts overall wellbeing, strengthens muscles, and encourages healthy social behavior.
- Emphasizes stress relief, fun, and natural instinct satisfaction, helping dogs become happier and more active.

3. Safe & Guided Usage

- Provides simple, owner-friendly instructions to help guide dogs safely and effectively.
- Encourages responsible use, preventing accidents and ensuring a smooth flow within the park.

4. Confidence & Skill Development

- Shows how repeated interaction with each station improves a dog's confidence, ability to overcome challenges, and willingness to explore new environments.

Purpose Behind the Sign Boards

These boards are designed to make dog parks **more interactive, educational, and enriching**. By offering clear information in a visually appealing format, they help every visitor understand the true value and purpose of agility equipment—transforming a simple park visit into a structured, rewarding, and joyful experience for pets and their families.

SKU KAP00056DPSB



Material Specifications:

Printing: High-quality UV flatbed printing colour. UV-printed graphics won't fade easily under sunlight. Smooth, professional finish.

Mounting: Fixed on GI (Galvanized Iron) frame with screws with powder coated. Weatherproof, rustproof, and durable.

Frame : 5mm Aluminium Composite Panel (ACP) with UV Printing

Dimensions : 18" X 12" (GI Frame)
Stand 3 feet Length / 14"